

SLC9A3 Antibody



PACO17919

Product Information

Size:

50ul

Reactivity:

Human, Mouse, Rat

Source:

Rabbit

Isotype:

IgG

Applications:

ELISA, IHC

Recommended dilutions:

ELISA:1:1000-1:5000, IHC:1:25-1:100

Protein Background:

Involved in pH regulation to eliminate acid, generated by active metabolism or to counter adverse environmental conditions. Major proton extruding system driven by the inward sodium ion chemical gradient. Plays an important role in signal transduction. Binds SLC9A3R1 and SLC9A3R2. Interacts with CHP1, CHP2 and SHANK2. Interacts with PDZD3 and interactions decrease in response to elevated calcium ion levels.

Gene ID:

SLC9A3

Uniprot

P48764

Synonyms:

Solute carrier family 9, subfamily A (NHE3, cation proton antiporter 3), member 3

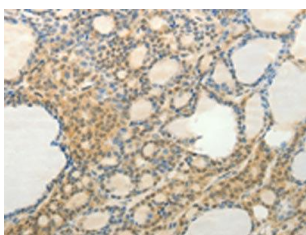
Immunogen:

Synthetic peptide of human SLC9A3.

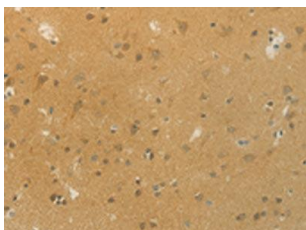
Storage:

-20° C, pH7.4 PBS, 0.05% NaN₃, 40% Glycerol

Product Images



The image on the left is immunohistochemistry of paraffin-embedded Human thyroid cancer tissue using PACO17919(SLC9A3 Antibody) at dilution 1/20, on the right is treated with synthetic peptide. (Original magnification: x—200).



The image on the left is immunohistochemistry of paraffin-embedded Human brain tissue using PACO17919(SLC9A3 Antibody) at dilution 1/20, on the right is treated with synthetic peptide. (Original magnification: x—200).