

### Product Information

**Size:**

50ul

**Reactivity:**

Human

**Source:**

Rabbit

**Isotype:**

IgG

**Applications:**

ELISA, IHC

**Recommended dilutions:**

ELISA:1:500-1:5000, IHC:1:10-1:25

**Protein Background:**

Lymphocyte antigen 75 is a protein that in humans is encoded by the LY75 gene. To direct captured antigens from the extracellular space to a specialized antigen-processing compartment as an endocytic receptor. Causes reduced proliferation of B-lymphocytes. Selection splicing results in multiple transcript variants encoding fusion products that share sequence identity with each individual gene product.

**Gene ID:**

LY75

**Uniprot**

O60449

**Synonyms:**

Lymphocyte antigen 75

**Immunogen:**

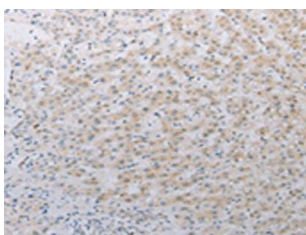
Synthetic peptide of human LY75.

**Storage:**

-20&deg; C, pH7.4 PBS, 0.05% NaN<sub>3</sub>, 40% Glycerol

## Product Images

---



The image on the left is immunohistochemistry of paraffin-embedded Human liver cancer tissue using PACO17778(LY75 Antibody) at dilution 1/25, on the right is treated with synthetic peptide. (Original magnification: x—200).