

CX3CL1 Antibody



PACO17756

Product Information

Size:

50ul

Reactivity:

Human, Mouse, Rat

Source:

Rabbit

Isotype:

IgG

Applications:

ELISA, IHC

Recommended dilutions:

ELISA:1:1000-1:10000, IHC:1:25-1:100

Protein Background:

This gene encodes a large cytokine protein of 373 amino acid, it contains multiple domains and is the only known member of the CX3C chemokine family. It is also commonly known under the names fractalkine (in humans) and neurotactin (in mice). The polypeptide structure of CX3CL1 differs from the typical structure of other chemokines. CX3CL1 is produced as a long protein (with 373-amino acid, in humans) with an extended mucin-like stalk and a chemokine domain on top. The mucin-like stalk permits it to bind to the surface of certain cells. However a soluble (90 kD) version of this chemokine has also been observed.

Gene ID:

CX3CL1

Uniprot

P78423

Synonyms:

chemokine (C-X3-C motif) ligand 1

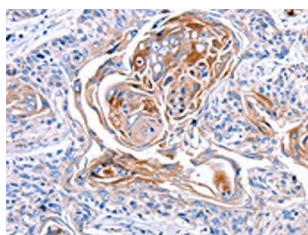
Immunogen:

Synthetic peptide of human CX3CL1.

Storage:

-20°C, pH7.4 PBS, 0.05% Na₃N, 40% Glycerol

Product Images



The image on the left is immunohistochemistry of paraffin-embedded Human esophagus cancer tissue using PACO17756(CX3CL1 Antibody) at dilution 1/30, on the right is treated with synthetic peptide. (Original magnification: x—200).