

CXCR1 Antibody



PACO17754

Product Information

Size:

50ul

Reactivity:

Human

Source:

Rabbit

Isotype:

IgG

Applications:

ELISA, WB

Recommended dilutions:

ELISA:1:1000-1:2000, WB:1:200-1:1000

Protein Background:

The protein encoded by this gene is a member of the G-protein-coupled receptor family. This protein is a receptor for interleukin 8 (IL8). It binds to IL8 with high affinity, and transduces the signal through a G-protein activated second messenger system. Knockout studies in mice suggested that this protein inhibits embryonic oligodendrocyte precursor migration in developing spinal cord. This gene, IL8RB, a gene encoding another high affinity IL8 receptor, as well as IL8RBP, a pseudogene of IL8RB, form a gene cluster in a region mapped to chromosome 2q33-q36.

Gene ID:

CXCR1

Uniprot

P25024

Synonyms:

chemokine (C-X-C motif) receptor 1

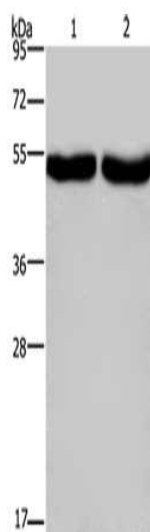
Immunogen:

Synthetic peptide of human CXCR1.

Storage:

-20° C, pH7.4 PBS, 0.05% NaN₃, 40% Glycerol

Product Images



Gel: 8%SDS-PAGE, Lysate: 40 μ g, Lane 1-2: Human colon cancer tissue, Human placenta tissue, Primary antibody: PACO17754(CXCR1 Antibody) at dilution 1/200, Secondary antibody: Goat anti rabbit IgG at 1/8000 dilution, Exposure time: 2 minutes.