

## Product Information

**Size:**

50ul

**Reactivity:**

Human, Mouse, Rat

**Source:**

Rabbit

**Isotype:**

IgG

**Applications:**

ELISA, WB, IHC

**Recommended dilutions:**

ELISA:1:500-1:5000, WB:1:200-1:1000,  
IHC:1:10-1:50

**Protein Background:**

This gene encodes a member of the CRMP (collapsing response mediator protein) family thought to be involved in neural development. Antibodies to the encoded protein were found in some patients with neurologic symptoms who had paraneoplastic syndrome. A pseudogene of this gene is found on chromosome 11. Multiple alternatively spliced variants, encoding the same protein, have been identified.

**Gene ID:**

DPYSL5

**Uniprot**

Q9BPU6

**Synonyms:**

dihydropyrimidinase-like 5

**Immunogen:**

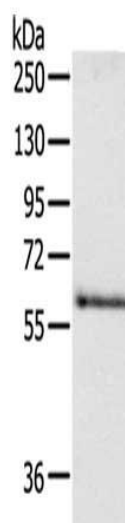
Synthetic peptide of human DPYSL5.

**Storage:**

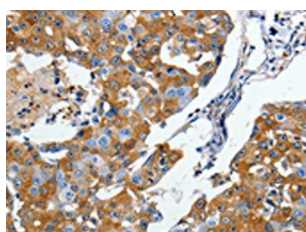
-20&deg; C, pH7.4 PBS, 0.05% NaN<sub>3</sub>, 40% Glycerol

## Product Images

---



Gel: 8%SDS-PAGE, Lysate: 40  $\mu$ g, Lane: Human fetal brain tissue, Primary antibody: PACO17729(DPYSL5 Antibody) at dilution 1/250, Secondary antibody: Goat anti rabbit IgG at 1/8000 dilution, Exposure time: 30 seconds.



The image on the left is immunohistochemistry of paraffin-embedded Human breast cancer tissue using PACO17729(DPYSL5 Antibody) at dilution 1/10, on the right is treated with synthetic peptide. (Original magnification: x—200).