

Product Information

Size:

50ul

Reactivity:

Human, Mouse, Rat

Source:

Rabbit

Isotype:

IgG

Applications:

ELISA, WB, IHC

Recommended dilutions:

ELISA:1:1000-1:5000, WB:1:500-1:1000,
IHC:1:25-1:100

Protein Background:

Collapsin response mediator protein 3 is an enzyme that in humans is encoded by the CRMP3 gene. It is necessary for signaling by class 3 semaphorins and subsequent remodeling of the cytoskeleton. And plays a role in axon guidance, neuronal growth cone collapse and cell migration. Homotetramer, and heterotetramer with CRMP1, DPYSL2, DPYSL3 or DPYSL5. Interacts with PLEXA1. Phosphorylated upon DNA damage, probably by ATM or ATR.

Gene ID:

DPYSL4

Uniprot

O14531

Synonyms:

dihydropyrimidinase-like 4

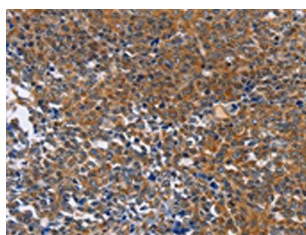
Immunogen:

Synthetic peptide of human DPYSL4.

Storage:

-20° C, pH7.4 PBS, 0.05% NaN3, 40% Glycerol

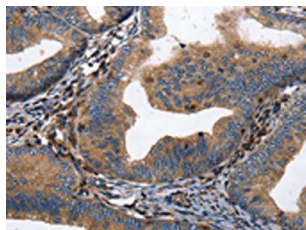
Product Images



The image on the left is immunohistochemistry of paraffin-embedded Human ovarian cancer tissue using PACO17725(DPYSL4 Antibody) at dilution 1/15, on the right is treated with synthetic peptide. (Original magnification: x—200).



Gel: 8%SDS-PAGE, Lysate: 30 μ g, Lane: Human fetal brain tissue, Primary antibody: PACO17725(DPYSL4 Antibody) at dilution 1/500, Secondary antibody: Goat anti rabbit IgG at 1/8000 dilution, Exposure time: 20 seconds.



The image on the left is immunohistochemistry of paraffin-embedded Human cervical cancer tissue using PACO17725(DPYSL4 Antibody) at dilution 1/15, on the right is treated with synthetic peptide. (Original magnification: x—200).