

# CLEC2A Antibody



PACO17707

---

## Product Information

**Size:**

50ul

**Reactivity:**

Human

**Source:**

Rabbit

**Isotype:**

IgG

**Applications:**

ELISA, IHC

**Recommended dilutions:**

ELISA:1:2000-1:5000, IHC:1:50-1:200

**Protein Background:**

CLEC2A belongs to the CLEC2 family of activation-induced, natural killer gene complex-encoded C-type lectin-like receptors.

**Gene ID:**

CLEC2A

**Uniprot**

Q6UWV9

**Synonyms:**

C-type lectin domain family 2, member A

**Immunogen:**

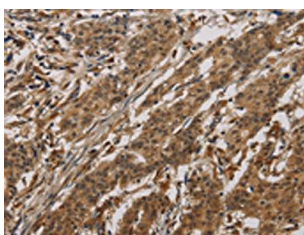
Synthetic peptide of human CLEC2A.

**Storage:**

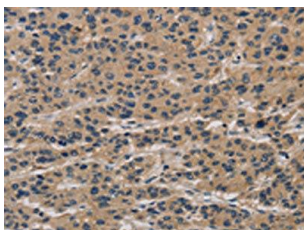
-20&deg; C, pH7.4 PBS, 0.05% NaN<sub>3</sub>, 40% Glycerol

## Product Images

---



The image on the left is immunohistochemistry of paraffin-embedded Human gastric cancer tissue using PACO17707 (CLEC2A Antibody) at dilution 1/20, on the right is treated with synthetic peptide. (Original magnification: x—200).



The image on the left is immunohistochemistry of paraffin-embedded Human liver cancer tissue using PACO17707 (CLEC2A Antibody) at dilution 1/20, on the right is treated with synthetic peptide. (Original magnification: x—200).