

KRT10 Antibody



PACO17705

Product Information

Size:

50ul

Reactivity:

Human, Mouse, Rat

Source:

Rabbit

Isotype:

IgG

Applications:

ELISA, IHC

Recommended dilutions:

ELISA:1:500-1:5000, IHC:1:25-1:100

Protein Background:

This gene encodes a member of the type I (acid, c) cytokeratin family, which belongs to the superfamily of intermediate filament (IF) proteins. Keratins are heteropolymeric structural proteins which form the intermediate filament. These filaments, along with actin microfilaments and microtubules, compose the cytoskeleton of epithelial cells. Mutations in this gene are associated with epidermolytic hyperkeratosis. This gene is located within a cluster of keratin family members on chromosome 17q21.

Gene ID:

KRT10

Uniprot

P13645

Synonyms:

Keratin, type I cytoskeletal 10

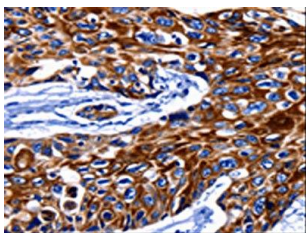
Immunogen:

Synthetic peptide of human KRT10.

Storage:

-20° C, pH7.4 PBS, 0.05% NaN₃, 40% Glycerol

Product Images



The image on the left is immunohistochemistry of paraffin-embedded Human esophagus cancer tissue using PACO17705(KRT10 Antibody) at dilution 1/25, on the right is treated with synthetic peptide. (Original magnification: x—200).