

Product Information

Size:

50ul

Reactivity:

Human, Mouse, Rat

Source:

Rabbit

Isotype:

IgG

Applications:

ELISA, WB, IHC

Recommended dilutions:

ELISA:1:1000-1:2000, WB:1:200-1:1000,
IHC:1:50-1:200

Protein Background:

The protein encoded by this intronless gene is a bZIP transcription factor which can bind as a homodimer to certain DNA regulatory regions. It can also form heterodimers with the related protein CEBP-alpha. The encoded protein is important in the regulation of genes involved in immune and inflammatory responses, and may be involved in the regulation of genes associated with activation and/or differentiation of macrophages. The cytogenetic location of this locus has been reported as both 8p11 and 8q11.

Gene ID:

CEBPD

Uniprot

P49716

Synonyms:

CCAAT/enhancer binding protein (C/EBP), delta

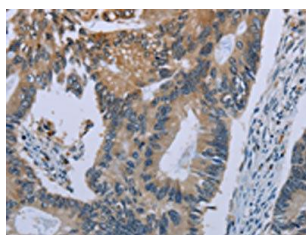
Immunogen:

Synthetic peptide of human CEBPD.

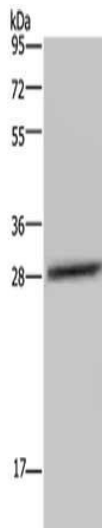
Storage:

-20° C, pH7.4 PBS, 0.05% NaN₃, 40% Glycerol

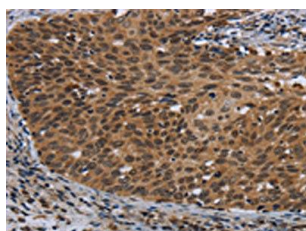
Product Images



The image on the left is immunohistochemistry of paraffin-embedded Human colon cancer tissue using PACO17685(CEBPD Antibody) at dilution 1/40, on the right is treated with synthetic peptide. (Original magnification: x—200).



Gel: 10%SDS-PAGE, Lysate: 40 μ g, Lane: LO2 cells, Primary antibody: PACO17685(CEBPD Antibody) at dilution 1/300, Secondary antibody: Goat anti rabbit IgG at 1/8000 dilution, Exposure time: 5 minutes.



The image on the left is immunohistochemistry of paraffin-embedded Human cervical cancer tissue using PACO17685(CEBPD Antibody) at dilution 1/40, on the right is treated with synthetic peptide. (Original magnification: x—200).