

## Product Information

**Size:**

50ul

**Reactivity:**

Human, Mouse

**Source:**

Rabbit

**Isotype:**

IgG

**Applications:**

ELISA, WB, IHC

**Recommended dilutions:**

ELISA:1:2000-1:5000, WB:1:500-1:2000,  
IHC:1:100-1:300

**Protein Background:**

This gene is one of several Cys-Cys (CC) cytokine genes clustered on the q arm of chromosome 16. Cytokines are a family of secreted proteins involved in immunoregulatory and inflammatory processes. The CC cytokines are proteins characterized by two adjacent cysteines. The cytokine encoded by this gene displays chemotactic activity for T lymphocytes, but not monocytes or granulocytes. The product of this gene binds to chemokine receptors CCR4 and CCR8. This chemokine plays important roles in T cell development in thymus as well as in trafficking and activation of mature T cells.

**Gene ID:**

CCL17

**Uniprot**

Q92583

**Synonyms:**

chemokine (C-C motif) ligand 17

**Immunogen:**

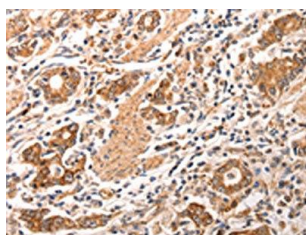
Synthetic peptide of human CCL17.

**Storage:**

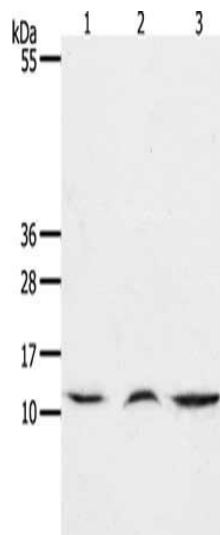
-20&deg; C, pH7.4 PBS, 0.05% NaN3, 40% Glycerol

## Product Images

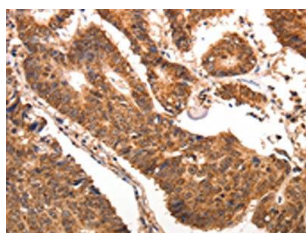
---



The image on the left is immunohistochemistry of paraffin-embedded Human gastric cancer tissue using PACO17666(CCL17 Antibody) at dilution 1/70, on the right is treated with synthetic peptide. (Original magnification: x—200).



Gel: 15%SDS-PAGE, Lysate: 40 &mu; g, Lane 1-3: Mouse lung tissue, Mouse thymus tissue, human fetal muscle tissue, Primary antibody: PACO17666(CCL17 Antibody) at dilution 1/1300, Secondary antibody: Goat anti rabbit IgG at 1/8000 dilution, Exposure time: 45 seconds.



The image on the left is immunohistochemistry of paraffin-embedded Human colon cancer tissue using PACO17666(CCL17 Antibody) at dilution 1/70, on the right is treated with synthetic peptide. (Original magnification: x—200).