

PACO17639

---

## Product Information

**Size:**

50ul

**Reactivity:**

Human, Mouse, Rat

**Source:**

Rabbit

**Isotype:**

IgG

**Applications:**

ELISA, IHC

**Recommended dilutions:**

ELISA:1:1000-1:2000, IHC:1:25-1:100

**Protein Background:**

The protein encoded by this gene is a member of the fibroblast growth factor (FGF) family. FGF family members possess broad mitogenic and cell survival activities, and are involved in a variety of biological processes, including embryonic development, cell growth, morphogenesis, tissue repair, tumor growth and invasion. This protein is a potent epithelial cell-specific growth factor, whose mitogenic activity is predominantly exhibited in keratinocytes but not in fibroblasts and endothelial cells. Studies of mouse and rat homologs of this gene implicated roles in morphogenesis of epithelium, reepithelialization of wounds, hair development and early lung organogenesis.

**Gene ID:**

FGF7

**Uniprot**

P21781

**Synonyms:**

Fibroblast growth factor 7

**Immunogen:**

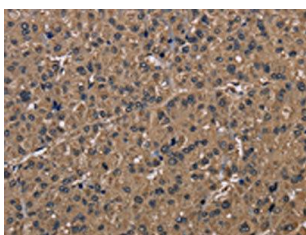
Synthetic peptide of human FGF7.

**Storage:**

-20&deg; C, pH7.4 PBS, 0.05% NaN3, 40% Glycerol

## Product Images

---



The image on the left is immunohistochemistry of paraffin-embedded Human liver cancer tissue using PACO17639(FGF7 Antibody) at dilution 1/30, on the right is treated with synthetic peptide. (Original magnification: x—200).