

## Product Information

**Size:**

50ul

**Reactivity:**

Human, Mouse, Rat

**Source:**

Rabbit

**Isotype:**

IgG

**Applications:**

ELISA, IHC

**Recommended dilutions:**

ELISA:1:3000-1:10000, IHC:1:50-1:200

**Protein Background:**

This gene encodes a member of the basic helix-loop-helix (BHLH) family of transcription factors. The protein activates transcription by binding to the E box (5'-CANNTG-3'). Dimerization with other BHLH proteins is required for efficient DNA binding. This protein plays a role in the neuronal commitment and differentiation and in the generation of olfactory and autonomic neurons. Mutations in this gene may contribute to the congenital central hypoventilation syndrome (CCHS) phenotype in rare cases.

**Gene ID:**

ASCL1

**Uniprot**

P50553

**Synonyms:**

achaete-scute complex homolog 1 (Drosophila)

**Immunogen:**

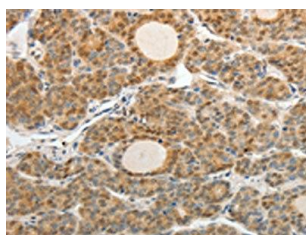
Synthetic peptide of human ASCL1.

**Storage:**

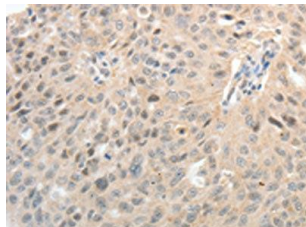
-20&deg; C, pH7.4 PBS, 0.05% NaN3, 40% Glycerol

## Product Images

---



The image on the left is immunohistochemistry of paraffin-embedded Human thyroid cancer tissue using PACO17613(ASCL1 Antibody) at dilution 1/30, on the right is treated with synthetic peptide. (Original magnification: x—200).



The image on the left is immunohistochemistry of paraffin-embedded Human ovarian cancer tissue using PACO17613(ASCL1 Antibody) at dilution 1/30, on the right is treated with synthetic peptide. (Original magnification: x—200).