

BMP3 Antibody



PACO17586

Product Information

Size:

50ul

Reactivity:

Human

Source:

Rabbit

Isotype:

IgG

Applications:

ELISA, IHC

Recommended dilutions:

ELISA:1:1000-1:2000, IHC:1:25-1:100

Protein Background:

BMP3 belongs to the transforming growth factor-beta (TGFB) superfamily. Bone morphogenic protein, also known as osteogenin, induces bone formation.

Gene ID:

BMP3

Uniprot

P12645

Synonyms:

bone morphogenetic protein 3

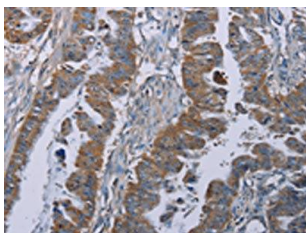
Immunogen:

Synthetic peptide of human BMP3.

Storage:

-20° C, pH7.4 PBS, 0.05% NaN₃, 40% Glycerol

Product Images



The image on the left is immunohistochemistry of paraffin-embedded Human esophagus cancer tissue using PACO17586(BMP3 Antibody) at dilution 1/30, on the right is treated with synthetic peptide. (Original magnification: x—200).