

RAB3C Antibody



PACO17551

Product Information

Size:

50ul

Reactivity:

Human, Mouse, Rat

Source:

Rabbit

Isotype:

IgG

Applications:

ELISA, WB, IHC

Recommended dilutions:

ELISA:1:2000-1:10000, WB:1:500-1:2000,
IHC:1:25-1:100

Protein Background:

Ras-related protein Rab-3C is a protein that in humans is encoded by the RAB3C gene. RAB proteins, such as RAB3C, are small GTPases implicated in the regulation of vesicular trafficking between membrane compartments. It involved in rotein transport and vesicular traffic probably.

Gene ID:

RAB3C

Uniprot

Q96E17

Synonyms:

Ras-related protein Rab-3C

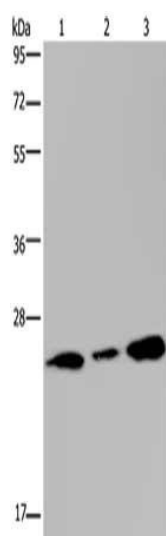
Immunogen:

Synthetic peptide of human RAB3c.

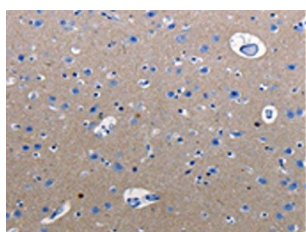
Storage:

-20° C, pH7.4 PBS, 0.05% NaN3, 40% Glycerol

Product Images



Gel: 10%SDS-PAGE, Lysate: 40 μ g, Lane 1-2: Human fetal brain tissue, 293T cells, Primary antibody: PACO17551(RAB3c Antibody) at dilution 1/400, Secondary antibody: Goat anti rabbit IgG at 1/8000 dilution, Exposure time: 1 minute.



The image on the left is immunohistochemistry of paraffin-embedded Human cervical cancer tissue using PACO17551(RAB3c Antibody) at dilution 1/25, on the right is treated with synthetic peptide. (Original magnification: x—200).