

RAB5C Antibody



PACO17549

Product Information

Size:

50ul

Reactivity:

Human, Mouse

Source:

Rabbit

Isotype:

IgG

Applications:

ELISA, WB

Recommended dilutions:

ELISA:1:2000-1:5000, WB:1:500-1:2000

Protein Background:

The protein is a member of the Rab protein family. Members of the Rab protein family are small GTPases of the Ras superfamily that are thought to ensure fidelity in the process of docking and/or fusion of vesicles with their correct acceptor compartment. The function is protein transport, Probably involved in vesicular traffic.

Gene ID:

RAB5C

Uniprot

P51148

Synonyms:

Ras-related protein Rab-5C

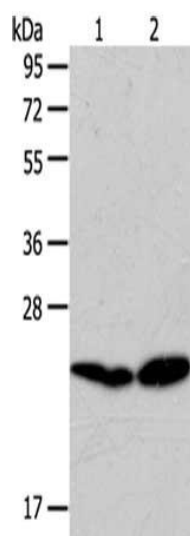
Immunogen:

Synthetic peptide of human RAB5C.

Storage:

-20° C, pH7.4 PBS, 0.05% NaN₃, 40% Glycerol

Product Images



Gel: 10%SDS-PAGE, Lysate: 40 μ g, Lane 1-2: A549 cells, Lovo cells,
Primary antibody: PACO17549(RAB5C Antibody) at dilution 1/100
dilution, Secondary antibody: Goat anti rabbit IgG at 1/8000 dilution,
Exposure time: 30 seconds.