

# RAB25 Antibody



PACO17509

---

## Product Information

**Size:**

50ul

**Reactivity:**

Human, Mouse

**Source:**

Rabbit

**Isotype:**

IgG

**Applications:**

ELISA, IHC

**Recommended dilutions:**

ELISA:1:1000-1:5000, IHC:1:50-1:150

**Protein Background:**

RAB proteins, such as RAB25, are members of the RAS superfamily of small GTPases that are involved in membrane trafficking. Members of the RAB11 subfamily, including RAB25, control the return of internalized membrane-associated moieties to the cell surface.

**Gene ID:**

RAB25

**Uniprot**

P57735

**Synonyms:**

Ras-related protein Rab-25

**Immunogen:**

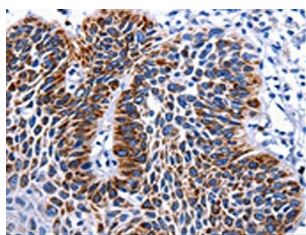
Synthetic peptide of human RAB25.

**Storage:**

-20&deg; C, pH7.4 PBS, 0.05% NaN<sub>3</sub>, 40% Glycerol

## Product Images

---



The image is immunohistochemistry of paraffin-embedded Human liver cancer tissue using PACO17509(RAB25 Antibody) at dilution 1/50. (Original magnification: 200).