

# RAB22A Antibody



PACO17506

---

## Product Information

**Size:**

50ul

**Reactivity:**

Human, Mouse

**Source:**

Rabbit

**Isotype:**

IgG

**Applications:**

ELISA, WB, IHC

**Recommended dilutions:**

ELISA:1:1000-1:5000, WB:1:500-1:2000,  
IHC:1:25-1:100

**Protein Background:**

The protein encoded by this gene is a member of the RAB family of small GTPases. The GTP-bound form of the encoded protein has been shown to interact with early-endosomal antigen 1, and may be involved in the trafficking of and interaction between endosomal compartments.

**Gene ID:**

RAB22A

**Uniprot**

Q9UL26

**Synonyms:**

Ras-related protein Rab-22A

**Immunogen:**

Synthetic peptide of human RAB22A.

**Storage:**

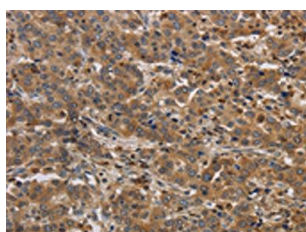
-20&deg; C, pH7.4 PBS, 0.05% NaN<sub>3</sub>, 40% Glycerol

## Product Images

---



Gel: 12%SDS-PAGE, Lysate: 40  $\mu$ g, Lane: MCF7 cells, Primary antibody: PACO17506(RAB22A Antibody) at dilution 1/650, Secondary antibody: Goat anti rabbit IgG at 1/8000 dilution, Exposure time: 30 seconds.



The image on the left is immunohistochemistry of paraffin-embedded Human liver cancer tissue using PACO17506(RAB22A Antibody) at dilution 1/20, on the right is treated with synthetic peptide. (Original magnification: x—200).