

PACO17500

---

## Product Information

**Size:**

50ul

**Reactivity:**

Human

**Source:**

Rabbit

**Isotype:**

IgG

**Applications:**

ELISA, IHC

**Recommended dilutions:**

ELISA:1:1000-1:2000, IHC:1:15-1:50

**Protein Background:**

The protein encoded by this gene belongs to the family of beta adrenergic receptors, which mediate catecholamine-induced activation of adenylate cyclase through the action of G proteins. This receptor is located mainly in the adipose tissue and is involved in the regulation of lipolysis and thermogenesis.

**Gene ID:**

ADRB3

**Uniprot**

P13945

**Synonyms:**

Adrenoceptor beta 3

**Immunogen:**

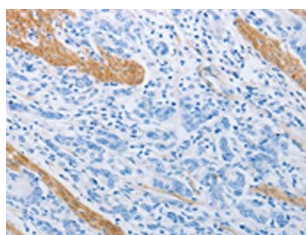
Synthetic peptide of human ADRB3.

**Storage:**

-20&deg; C, pH7.4 PBS, 0.05% NaN<sub>3</sub>, 40% Glycerol

## Product Images

---



The image on the left is immunohistochemistry of paraffin-embedded Human gastric cancer tissue using PACO17500(ADRB3 Antibody) at dilution 1/20, on the right is treated with synthetic peptide. (Original magnification: x—200).