

ADM2 Antibody



PACO17492

Product Information

Size:

50ul

Reactivity:

Human, Mouse, Rat

Source:

Rabbit

Isotype:

IgG

Applications:

ELISA, IHC

Recommended dilutions:

ELISA:1:2000-1:5000, IHC:1:50-1:200

Protein Background:

This gene encodes a protein which is a member of the calcitonin-related hormones. The encoded protein is involved in maintaining homeostasis in many tissues, acting via CRLR/RAMP receptor (calcitonin receptor-like receptor/receptor activity-modifying protein) complexes. Multiple alternatively spliced variants, encoding the same protein, have been identified.

Gene ID:

ADM2

Uniprot

Q7Z4H4

Synonyms:

adrenomedullin 2

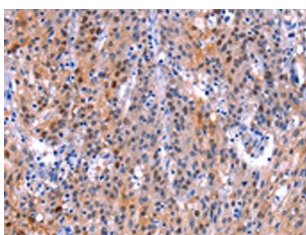
Immunogen:

Synthetic peptide of human ADM2.

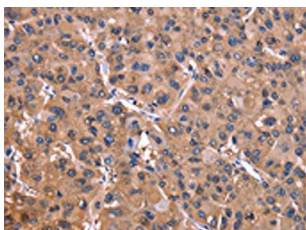
Storage:

-20° C, pH7.4 PBS, 0.05% NaN₃, 40% Glycerol

Product Images



The image on the left is immunohistochemistry of paraffin-embedded Human gastric cancer tissue using PACO17492(ADM2 Antibody) at dilution 1/40, on the right is treated with synthetic peptide. (Original magnification: x—200).



The image on the left is immunohistochemistry of paraffin-embedded Human liver cancer tissue using PACO17492(ADM2 Antibody) at dilution 1/40, on the right is treated with synthetic peptide. (Original magnification: x—200).