

Product Information

Size:

50ul

Reactivity:

Human, Mouse, Rat

Source:

Rabbit

Isotype:

IgG

Applications:

ELISA, WB, IHC

Recommended dilutions:

ELISA:1:2000-1:5000, WB:1:500-1:2000,
IHC:1:20-1:100

Protein Background:

Cytochrome b-c1 complex subunit 1, mitochondrial is a protein that in humans is encoded by the UQCRC1 gene. This is a component of the ubiquinol-cytochrome c reductase complex (complex III or cytochrome b-c1 complex), which is part of the mitochondrial respiratory chain. This protein may mediate formation of the complex between cytochromes c and c1.

Gene ID:

UQCRC1

Uniprot

P31930

Synonyms:

ubiquinol-cytochrome c reductase core protein I

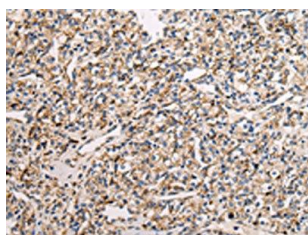
Immunogen:

Fusion protein of human UQCRC1.

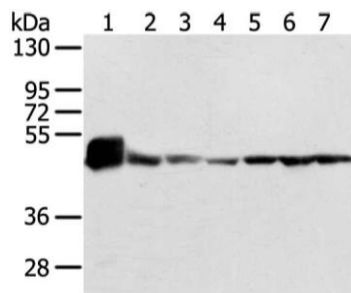
Storage:

-20° C, pH7.4 PBS, 0.05% NaN₃, 40% Glycerol

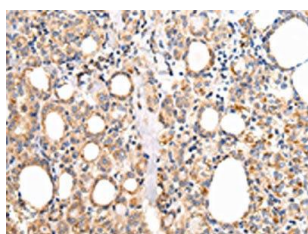
Product Images



The image on the left is immunohistochemistry of paraffin-embedded Human prostate cancer tissue using PACO17388(UQCRC1 Antibody) at dilution 1/20, on the right is treated with fusion protein. (Original magnification: x—200).



Gel: 8%SDS-PAGE, Lysate: 40 μ g, Lane 1-7: Mouse heart tissue and lo2 cell, 231 cell and human fetal brain tissue, A431, hela and 293T cell, Primary antibody: PACO17388(UQCRC1 Antibody) at dilution 1/200 dilution, Secondary antibody: Goat anti rabbit IgG at 1/8000 dilution, Exposure time: 1 second.



The image on the left is immunohistochemistry of paraffin-embedded Human thyroid cancer tissue using PACO17388(UQCRC1 Antibody) at dilution 1/20, on the right is treated with fusion protein. (Original magnification: x—200).