

Product Information

Size:

50ul

Reactivity:

Human

Source:

Rabbit

Isotype:

IgG

Applications:

ELISA, IHC

Recommended dilutions:

ELISA:1:1000-1:2000, IHC:1:10-1:50

Protein Background:

Ubiquitin is a 77 amino acid, protein that targets proteins for degradation by the 26S proteasome. Ubiquitin-like proteins are not directly involved in protein degradation, but appear to have many mechanistic similarities with the ubiquitin pathway. UBL4B (Ubiquitin-like protein 4B) is a 174 amino acid, cytoplasmic protein that contains a ubiquitin-like domain. UBL4B likely arose by retroposition during mammalian evolution from UBL4A, an X-linked intron-bearing housekeeping gene. While UBL4A is highly conserved, UBL4B has undergone rapid evolution and may have evolved new functions. Expression of UBL4B is restricted to post-meiotic germ cells in testis and ovarian tissue, where it likely functions in post-translational protein modification.

Gene ID:

UBL4B

Uniprot

Q8N7F7

Synonyms:

ubiquitin-like 4B

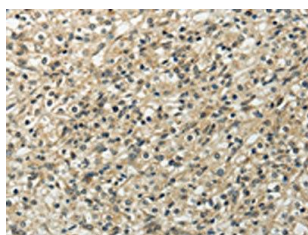
Immunogen:

Full length fusion protein.

Storage:

-20° C, pH7.4 PBS, 0.05% NaN₃, 40% Glycerol

Product Images



The image on the left is immunohistochemistry of paraffin-embedded Human prostate cancer tissue using PACO17358(UBL4B Antibody) at dilution 1/20, on the right is treated with fusion protein. (Original magnification: x—200).