

TUBA1C Antibody



PACO17334

Product Information

Size:

50ul

Reactivity:

Human, Mouse, Rat

Source:

Rabbit

Isotype:

IgG

Applications:

ELISA, WB, IHC

Recommended dilutions:

ELISA:1:2000-1:5000, WB:1:500-1:2000,
IHC:1:25-1:100

Protein Background:

Tubulin is the major constituent of microtubules. It binds two moles of GTP, one at an exchangeable site on the beta chain and one at a non-exchangeable site on the alpha chain.

Gene ID:

TUBA1C

Uniprot

Q9BQE3

Synonyms:

tubulin, alpha 1c

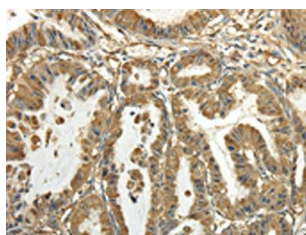
Immunogen:

Fusion protein of human TUBA1C.

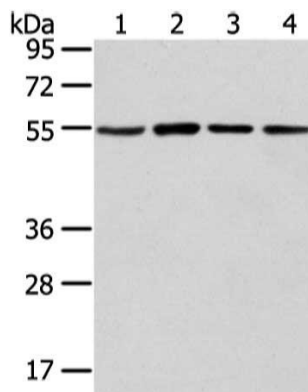
Storage:

-20°C; C, pH7.4 PBS, 0.05% NaN₃, 40% Glycerol

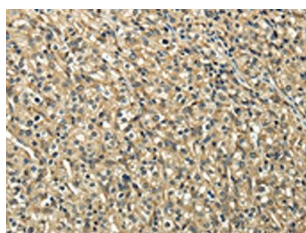
Product Images



The image on the left is immunohistochemistry of paraffin-embedded Human esophagus cancer tissue using PACO17334(TUBA1C Antibody) at dilution 1/20, on the right is treated with fusion protein. (Original magnification: x—200).



Gel: 8%SDS-PAGE, Lysate: 40 μ g, Lane 1-4: NIH/3T3, K562, A431 and hela cell, Primary antibody: PACO17334(TUBA1C Antibody) at dilution 1/300 dilution, Secondary antibody: Goat anti rabbit IgG at 1/8000 dilution, Exposure time: 10 seconds.



The image on the left is immunohistochemistry of paraffin-embedded Human prostate cancer tissue using PACO17334(TUBA1C Antibody) at dilution 1/20, on the right is treated with fusion protein. (Original magnification: x—200).