

# TMPRSS11A Antibody



PACO17283

---

## Product Information

**Size:**

50ul

**Reactivity:**

Human

**Source:**

Rabbit

**Isotype:**

IgG

**Applications:**

ELISA, IHC

**Recommended dilutions:**

ELISA:1:2000-1:5000, IHC:1:25-1:100

**Protein Background:**

Probable serine protease which may play a role in cellular senescence. Overexpression inhibits cell growth and induce G1 cell cycle arrest.

**Gene ID:**

TMPRSS11A

**Uniprot**

Q6ZMR5

**Synonyms:**

transmembrane protease, serine 11A

**Immunogen:**

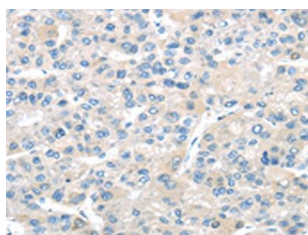
Fusion protein of human TMPRSS11A.

**Storage:**

-20&deg; C, pH7.4 PBS, 0.05% NaN<sub>3</sub>, 40% Glycerol

## Product Images

---



The image on the left is immunohistochemistry of paraffin-embedded Human liver cancer tissue using PACO17283(TMPRS11A Antibody) at dilution 1/20, on the right is treated with fusion protein. (Original magnification: x—200).