

TMPRSS11E Antibody



PACO17281

Product Information

Size:

50ul

Reactivity:

Human

Source:

Rabbit

Isotype:

IgG

Applications:

ELISA, IHC

Recommended dilutions:

ELISA:1:2000-1:10000, IHC:1:30-1:150

Protein Background:

Serine protease which possesses both gelatinolytic and caseinolytic activities. Shows a preference for Arg in the P1 position.

Gene ID:

TMPRSS11E

Uniprot

Q9UL52

Synonyms:

transmembrane protease, serine 11E

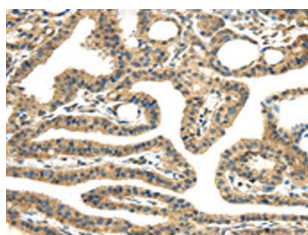
Immunogen:

Fusion protein of human TMPRSS11E.

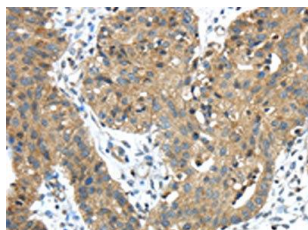
Storage:

-20° C, pH7.4 PBS, 0.05% NaN₃, 40% Glycerol

Product Images



The image on the left is immunohistochemistry of paraffin-embedded Human thyroid cancer tissue using PACO17281(TMPRSS11E Antibody) at dilution 1/45, on the right is treated with fusion protein. (Original magnification: x—200).



The image on the left is immunohistochemistry of paraffin-embedded Human breast cancer tissue using PACO17281(TMPRSS11E Antibody) at dilution 1/45, on the right is treated with fusion protein. (Original magnification: x—200).