

## Product Information

**Size:**

50ul

**Reactivity:**

Human, Mouse

**Source:**

Rabbit

**Isotype:**

IgG

**Applications:**

ELISA, WB, IHC

**Recommended dilutions:**

ELISA:1:2000-1:10000, WB:1:1000-1:5000,  
IHC:1:30-1:150

**Protein Background:**

Involved in vesicular protein trafficking, mainly in the early secretory pathway. targeting. Involved in the maintenance of the Golgi apparatus. Appears to play a role in the biosynthesis of secreted cargo including processing. Involved in endoplasmic reticulum stress response. May play a role in the regulation of heat-shock response and apoptosis.

**Gene ID:**

TMED4

**Uniprot**

Q7Z7H5

**Synonyms:**

transmembrane emp24 protein transport domain containing 4

**Immunogen:**

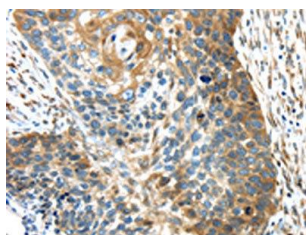
Fusion protein of human TMED4.

**Storage:**

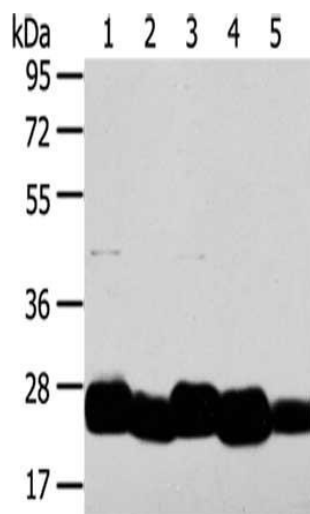
-20&deg; C, pH7.4 PBS, 0.05% NaN3, 40% Glycerol

## Product Images

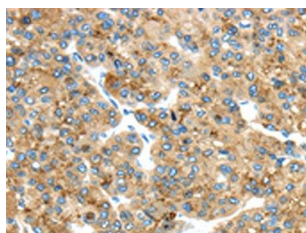
---



The image on the left is immunohistochemistry of paraffin-embedded Human esophagus cancer tissue using PACO17272(TMED4 Antibody) at dilution 1/45, on the right is treated with fusion protein. (Original magnification: x—200).



Gel: 8%SDS-PAGE, Lysate: 40 &mu; g, Lane 1-5: HepG2 cells, K562 cells, Hela cells, A549 cells, Mouse intestines tissue, Primary antibody: PACO17272(TMED4 Antibody) at dilution 1/800 dilution, Secondary antibody: Goat anti rabbit IgG at 1/8000 dilution, Exposure time: 1 minute.



The image on the left is immunohistochemistry of paraffin-embedded Human liver cancer tissue using PACO17272(TMED4 Antibody) at dilution 1/45, on the right is treated with fusion protein. (Original magnification: x—200).