

Product Information

Size:

50ul

Reactivity:

Human, Mouse

Source:

Rabbit

Isotype:

IgG

Applications:

ELISA, WB, IHC

Recommended dilutions:

ELISA:1:2000-1:5000, WB:1:500-1:2000,
IHC:1:10-1:50

Protein Background:

This gene encodes a member of the TGF-beta family of proteins. The encoded protein is secreted and plays a role in left-right asymmetry determination of organ systems during development. The protein may also play a role in endometrial bleeding. Mutations in this gene have been associated with left-right axis malformations, particularly in the heart and lungs. Some types of infertility have been associated with dysregulated expression of this gene in the endometrium. Alternative processing of this protein can yield three different products. This gene is closely linked to both a related family member and a related pseudogene. Alternate splicing of this gene results in multiple transcript variants.

Gene ID:

LEFTY2

Uniprot

O00292

Synonyms:

left-right determination factor 2

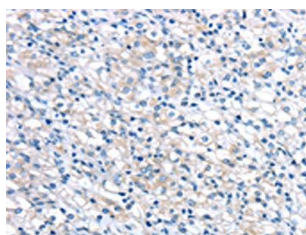
Immunogen:

Full length fusion protein.

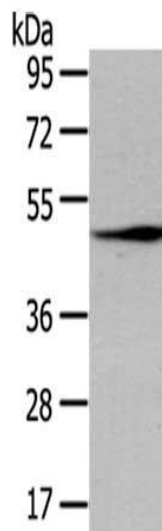
Storage:

-20° C, pH7.4 PBS, 0.05% NaN₃, 40% Glycerol

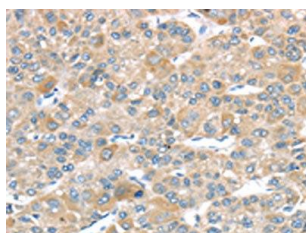
Product Images



The image on the left is immunohistochemistry of paraffin-embedded Human prostate cancer tissue using PACO17227(LEFTY2 Antibody) at dilution 1/20, on the right is treated with fusion protein. (Original magnification: x—200).



Gel: 8%SDS-PAGE, Lysate: 40 μ g, , Primary antibody: PACO17227(LEFTY2 Antibody) at dilution 1/200 dilution, Secondary antibody: Goat anti rabbit IgG at 1/8000 dilution, Exposure time: 30 seconds.



The image on the left is immunohistochemistry of paraffin-embedded Human liver cancer tissue using PACO17227(LEFTY2 Antibody) at dilution 1/20, on the right is treated with fusion protein. (Original magnification: x—200).