

Product Information

Size:

50ul

Reactivity:

Human, Mouse

Source:

Rabbit

Isotype:

IgG

Applications:

ELISA, WB, IHC

Recommended dilutions:

ELISA:1:2000-1:5000, WB:1:500-1:2000,
IHC:1:25-1:100

Protein Background:

The protein encoded by this gene has sequence similarity with members of the WD40 repeat-containing protein family. The WD40 group is a large family of proteins, which appear to have a regulatory function. It is believed that the WD40 repeats mediate protein-protein interactions and members of the family are involved in signal transduction, RNA processing, gene regulation, vesicular trafficking, cytoskeletal assembly and may play a role in the control of cytotypic differentiation.

Gene ID:

TBL1X

Uniprot

O60907

Synonyms:

transducin (beta)-like 1X-linked

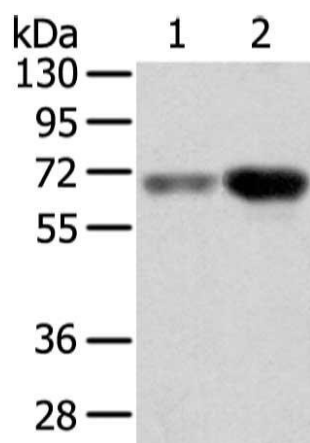
Immunogen:

Fusion protein of human TBL1X.

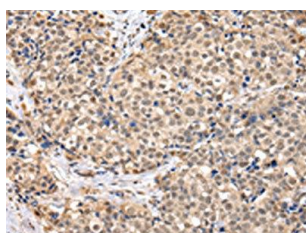
Storage:

-20° C, pH7.4 PBS, 0.05% NaN3, 40% Glycerol

Product Images



Gel: 8%SDS-PAGE, Lysate: 40 μ g, Lane 1-2: Human lung cancer and placenta tissue, Primary antibody: PACO17212(TBL1X Antibody) at dilution 1/500 dilution, Secondary antibody: Goat anti rabbit IgG at 1/8000 dilution, Exposure time: 5 seconds.



The image on the left is immunohistochemistry of paraffin-embedded Human breast cancer tissue using PACO17212(TBL1X Antibody) at dilution 1/30, on the right is treated with fusion protein. (Original magnification: x—200).