

# TBC1D22A Antibody



PACO17211

---

## Product Information

**Size:**

50ul

**Reactivity:**

Human, Mouse

**Source:**

Rabbit

**Isotype:**

IgG

**Applications:**

ELISA, WB, IHC

**Recommended dilutions:**

ELISA:1:2000-1:5000, WB:1:500-1:2000,  
IHC:1:25-1:100

**Protein Background:**

TBC1D22A (TBC1 domain family, member 22A), also known as C22orf4, is a 517 amino acid, protein that contains one Rab-GAP TBC domain and is thought to function as a GTPase-activating protein for Rab family members. Multiple isoforms of TBC1D22A exist due to alternative splicing events. The gene encoding TBC1D22A maps to human chromosome 22, which houses over 500 genes and is the second smallest human chromosome.

**Gene ID:**

TBC1D22A

**Uniprot**

Q8WUA7

**Synonyms:**

TBC1 domain family, member 22A

**Immunogen:**

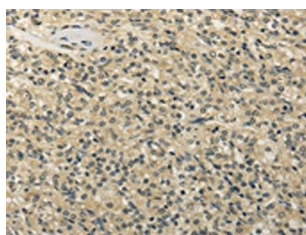
Fusion protein of human TBC1D22A.

**Storage:**

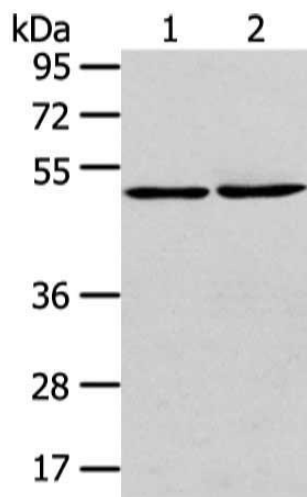
-20&deg; C, pH7.4 PBS, 0.05% NaN<sub>3</sub>, 40% Glycerol

## Product Images

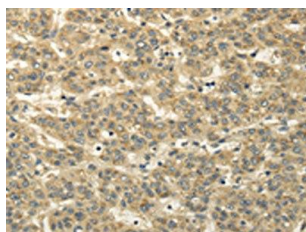
---



The image on the left is immunohistochemistry of paraffin-embedded Human prostate cancer tissue using PACO17211(TBC1D22A Antibody) at dilution 1/20, on the right is treated with fusion protein. (Original magnification: x—200).



Gel: 8%SDS-PAGE, Lysate: 40 &mu; g, Lane 1-2: A431 cell and human lung cancer tissue, Primary antibody: PACO17211(TBC1D22A Antibody) at dilution 1/300 dilution, Secondary antibody: Goat anti rabbit IgG at 1/8000 dilution, Exposure time: 1 minute.



The image on the left is immunohistochemistry of paraffin-embedded Human liver cancer tissue using PACO17211(TBC1D22A Antibody) at dilution 1/20, on the right is treated with fusion protein. (Original magnification: x—200).