

SULT1B1 Antibody



PACO17173

Product Information

Size:

50ul

Reactivity:

Human

Source:

Rabbit

Isotype:

IgG

Applications:

ELISA, WB, IHC

Recommended dilutions:

ELISA:1:2000-1:10000, WB:1:1000-1:5000,
IHC:1:25-1:100

Protein Background:

Sulfotransferase enzymes catalyze the sulfate conjugation of many hormones, neurotransmitters, drugs, and xenobiotic compounds. These cytosolic enzymes are different in their tissue distributions and substrate specificities. The gene structure (number and length of exons) is similar among family members. However, the total genomic length of this gene is greater than that of other SULT1 genes.

Gene ID:

SULT1B1

Uniprot

O43704

Synonyms:

sulfotransferase family, cytosolic, 1B, member 1

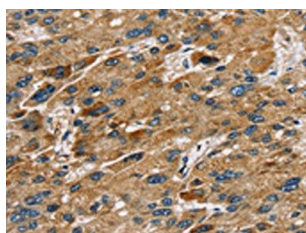
Immunogen:

Fusion protein of human SULT1B1.

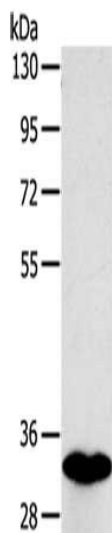
Storage:

-20° C, pH7.4 PBS, 0.05% NaN₃, 40% Glycerol

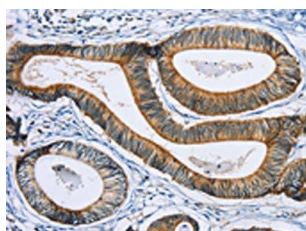
Product Images



The image on the left is immunohistochemistry of paraffin-embedded Human liver cancer tissue using PACO17173(SULT1B1 Antibody) at dilution 1/30, on the right is treated with fusion protein. (Original magnification: x—200).



Gel: 8%SDS-PAGE, Lysate: 40 μ g, Lane: Human fetal intestines tissue, Primary antibody: PACO17173(SULT1B1 Antibody) at dilution 1/800, Secondary antibody: Goat anti rabbit IgG at 1/8000 dilution, Exposure time: 3 seconds.



The image on the left is immunohistochemistry of paraffin-embedded Human colon cancer tissue using PACO17173(SULT1B1 Antibody) at dilution 1/30, on the right is treated with fusion protein. (Original magnification: x—200).