

### Product Information

**Size:**

50ul

**Reactivity:**

Human

**Source:**

Rabbit

**Isotype:**

IgG

**Applications:**

ELISA, WB

**Recommended dilutions:**

ELISA:1:1000-1:2000, WB:1:200-1:1000

**Protein Background:**

The product of this gene belongs to the family of highly homologous synovial sarcoma X (SSX) breakpoint proteins. These proteins may function as transcriptional repressors. They are also capable of eliciting spontaneous humoral and cellular immune responses in cancer patients, and are potentially useful targets in cancer vaccine-based immunotherapy.

**Gene ID:**

SSX1

**Uniprot**

Q16384

**Synonyms:**

synovial sarcoma, X breakpoint 1

**Immunogen:**

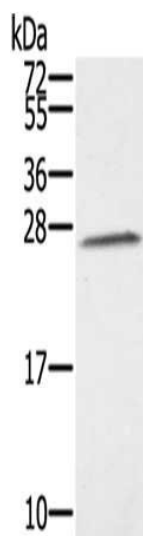
Fusion protein of human SSX1.

**Storage:**

-20&deg; C, pH7.4 PBS, 0.05% NaN<sub>3</sub>, 40% Glycerol

## Product Images

---



Gel: 12%SDS-PAGE, Lysate: 40  $\mu$ g, Lane: K562 cells, Primary antibody: PACO17153(SSX1 Antibody) at dilution 1/350, Secondary antibody: Goat anti rabbit IgG at 1/8000 dilution, Exposure time: 1 minute.