

PACO17097

---

## Product Information

**Size:**

50ul

**Reactivity:**

Human, Mouse

**Source:**

Rabbit

**Isotype:**

IgG

**Applications:**

ELISA, WB, IHC

**Recommended dilutions:**

ELISA:1:1000-1:2000, WB:1:200-1:1000,  
IHC:1:30-1:150

**Protein Background:**

This gene encodes a serine/arginine protein kinase specific for the SR (serine/arginine-rich domain) family of splicing factors. The protein localizes to the nucleus and the cytoplasm. It is thought to play a role in regulation of both constitutive and alternative splicing by regulating intracellular localization of splicing factors. Alternative splicing of this gene results in multiple transcript variants.

**Gene ID:**

SRPK1

**Uniprot**

Q96SB4

**Synonyms:**

SRSF protein kinase 1

**Immunogen:**

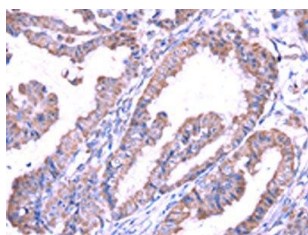
Fusion protein of human SRPK1.

**Storage:**

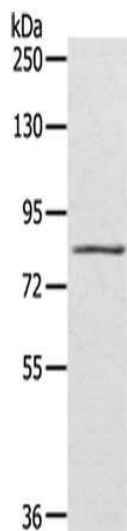
-20&deg; C, pH7.4 PBS, 0.05% NaN3, 40% Glycerol

## Product Images

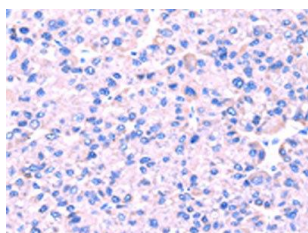
---



The image on the left is immunohistochemistry of paraffin-embedded Human esophagus cancer tissue using PACO17097(SRPK1 Antibody) at dilution 1/45, on the right is treated with fusion protein. (Original magnification: x—200).



Gel: 6%SDS-PAGE, Lysate: 40  $\mu$ g, Primary antibody: PACO17097(SRPK1 Antibody) at dilution 1/600 dilution, Secondary antibody: Goat anti rabbit IgG at 1/8000 dilution, Exposure time: 2 minutes.



The image on the left is immunohistochemistry of paraffin-embedded Human liver cancer tissue using PACO17097(SRPK1 Antibody) at dilution 1/45, on the right is treated with fusion protein. (Original magnification: x—200).