

SHPRH Antibody



PACO17091

Product Information

Size:

50ul

Reactivity:

Human, Mouse

Source:

Rabbit

Isotype:

IgG

Applications:

ELISA, IHC

Recommended dilutions:

ELISA:1:2000-1:10000, IHC:1:30-1:150

Protein Background:

SHPRH is a ubiquitously expressed protein that contains motifs characteristics of several DNA repair proteins, transcription factors, and helicases. SHPRH is a functional homolog of *S. cerevisiae* RAD5 (Unk et al. , 2006).

Gene ID:

SHPRH

Uniprot

Q149N8

Synonyms:

SNF2 histone linker PHD RING helicase, E3 ubiquitin protein ligase

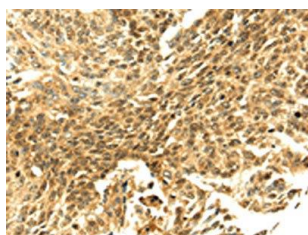
Immunogen:

Fusion protein of human SHPRH.

Storage:

-20° C, pH7.4 PBS, 0.05% NaN₃, 40% Glycerol

Product Images



The image on the left is immunohistochemistry of paraffin-embedded Human lung cancer tissue using PACO17091(SHPRH Antibody) at dilution 1/40, on the right is treated with fusion protein. (Original magnification: x—200).