

PACO17085

Product Information

Size:

50ul

Reactivity:

Human, Mouse

Source:

Rabbit

Isotype:

IgG

Applications:

ELISA, WB, IHC

Recommended dilutions:

ELISA:1:2000-1:5000, WB:1:500-1:2000,
IHC:1:10-1:50

Protein Background:

SerpinB11 (serpin peptidase inhibitor, clade B (ovalbumin), member 11), also known as EPIPIN or SERPIN11, is a 392 amino acid, cytoplasmic protein that belongs to the Ov-serpin subfamily and serpin family. Like other members of the serpin family, SerpinB11 has been identified as a noninhibitory intracellular protein. The gene encoding SerpinB11 maps to human chromosome 18, which houses over 300 protein-coding genes and contains nearly 76 million bases. There are a variety of diseases associated with defects in chromosome 18-localized genes, some of which include Trisomy 18 (also known as Edwards syndrome), Niemann-Pick disease, hereditary hemorrhagic telangiectasia, erythropoietic protoporphyria and follicular lymphomas.

Gene ID:

SERPINB11

Uniprot

Q96P15

Synonyms:

serpin peptidase inhibitor, clade B (ovalbumin), member 11 (gene/pseudogene)

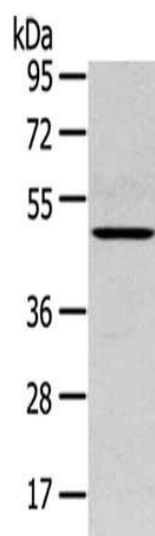
Immunogen:

Fusion protein of human SERPINB11.

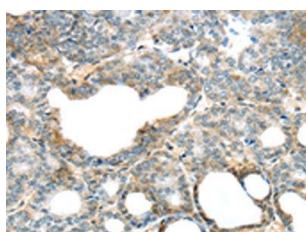
Storage:

-20° C, pH7.4 PBS, 0.05% NaN3, 40% Glycerol

Product Images



Gel: 8%SDS-PAGE, Lysate: 40 μ g, Primary antibody: PACO17085(SERPINB11 Antibody) at dilution 1/400 dilution, Secondary antibody: Goat anti rabbit IgG at 1/8000 dilution, Exposure time: 30 seconds.



The image on the left is immunohistochemistry of paraffin-embedded Human thyroid cancer tissue using PACO17085(SERPINB11 Antibody) at dilution 1/20, on the right is treated with fusion protein. (Original magnification: x—200).