

# SENP7 Antibody



PACO17073

---

## Product Information

**Size:**

50ul

**Reactivity:**

Human, Mouse, Rat

**Source:**

Rabbit

**Isotype:**

IgG

**Applications:**

ELISA, WB

**Recommended dilutions:**

ELISA:1:2000-1:10000, WB:1:1000-1:5000

**Protein Background:**

The reversible posttranslational modification of proteins by the addition of small ubiquitin-like SUMO proteins (see SUMO1; MIM 601912) is required for many cellular processes. SUMO-specific proteases, such as SENP7, process SUMO precursors to generate a C-terminal diglycine motif required for the conjugation reaction.

**Gene ID:**

SENP7

**Uniprot**

Q9BQF6

**Synonyms:**

SUMO1/sentrin specific peptidase 7

**Immunogen:**

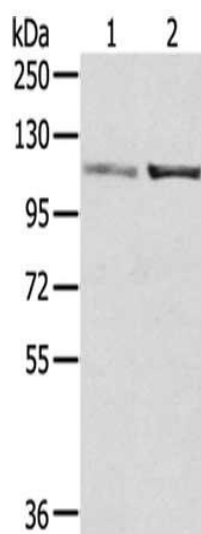
Fusion protein of human SENP7.

**Storage:**

-20&deg; C, pH7.4 PBS, 0.05% NaN<sub>3</sub>, 40% Glycerol

## Product Images

---



Gel: 6%SDS-PAGE, Lysate: 40  $\mu$ g, Lane 1-2: A172 cells, 231 cells, Primary antibody: PACO17073(SENP7 Antibody) at dilution 1/800 dilution, Secondary antibody: Goat anti rabbit IgG at 1/8000 dilution, Exposure time: 30 seconds.