

PACO17069

Product Information

Size:

50ul

Reactivity:

Human, Mouse, Rat

Source:

Rabbit

Isotype:

IgG

Applications:

ELISA, WB, IHC

Recommended dilutions:

ELISA:1:2000-1:5000, WB:1:500-1:2000,
IHC:1:25-1:100

Protein Background:

This gene encodes a cysteine protease that is a member of the sentrin-specific protease family. The encoded protein is involved in processing and deconjugation of the ubiquitin-like protein termed, neural precursor cell expressed developmentally downregulated 8. Alternate splicing results in multiple transcript variants.

Gene ID:

SENP8

Uniprot

Q96LD8

Synonyms:

SUMO/sentrin specific peptidase family member 8

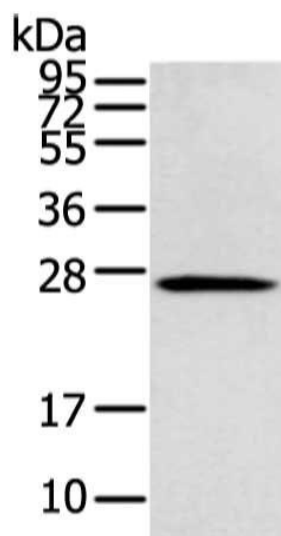
Immunogen:

Full length fusion protein.

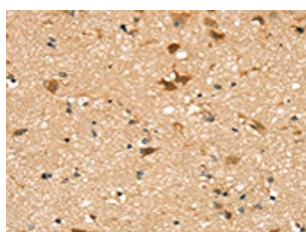
Storage:

-20° C, pH7.4 PBS, 0.05% NaN₃, 40% Glycerol

Product Images



Gel: 12%SDS-PAGE, Lysate: 60 μ g, Lane: 293T cell, Primary antibody: PACO17069(SENP8 Antibody) at dilution 1/400 dilution, Secondary antibody: Goat anti rabbit IgG at 1/8000 dilution, Exposure time: 15 seconds.



The image on the left is immunohistochemistry of paraffin-embedded Human brain tissue using PACO17069(SENP8 Antibody) at dilution 1/25, on the right is treated with fusion protein. (Original magnification: x—200).