

SCPEP1 Antibody



PACO16992

Product Information

Size:

50ul

Reactivity:

Human, Mouse, Rat

Source:

Rabbit

Isotype:

IgG

Applications:

ELISA, IHC

Recommended dilutions:

ELISA:1:2000-1:5000, IHC:1:20-1:100

Protein Background:

Retinoid-inducible serine carboxypeptidase is an enzyme that in humans is encoded by the SCPEP1 gene. May be involved in vascular wall and kidney homeostasis.

Gene ID:

SCPEP1

Uniprot

Q9HB40

Synonyms:

serine carboxypeptidase 1

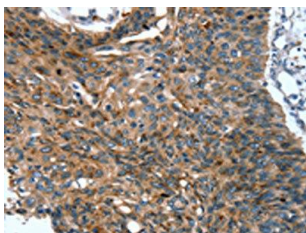
Immunogen:

Fusion protein of human SCPEP1.

Storage:

-20° C, pH7.4 PBS, 0.05% NaN₃, 40% Glycerol

Product Images



The image on the left is immunohistochemistry of paraffin-embedded Human esophagus cancer tissue using PACO16992(SCPEP1 Antibody) at dilution 1/20, on the right is treated with fusion protein. (Original magnification: x—200).