

# RASSF9 Antibody



PACO16948

---

## Product Information

**Size:**

50ul

**Reactivity:**

Human, Mouse, Rat

**Source:**

Rabbit

**Isotype:**

IgG

**Applications:**

ELISA, IHC

**Recommended dilutions:**

ELISA:1:2000-1:5000, IHC:1:50-1:200

**Protein Background:**

The protein encoded by this gene localizes to perinuclear endosomes. This protein associates with peptidylglycine alpha-amidating monooxygenase, and may be involved with the trafficking of this enzyme through secretory or endosomal pathways.

**Gene ID:**

RASSF9

**Uniprot**

O75901

**Synonyms:**

Ras association (RalGDS/AF-6) domain family (N-terminal) member 9

**Immunogen:**

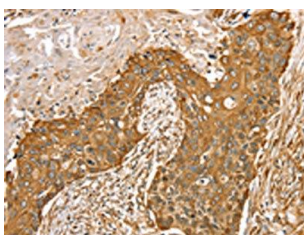
Fusion protein of human RASSF9.

**Storage:**

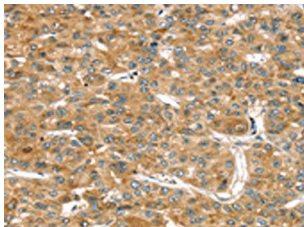
-20&deg; C, pH7.4 PBS, 0.05% NaN<sub>3</sub>, 40% Glycerol

## Product Images

---



The image on the left is immunohistochemistry of paraffin-embedded Human esophagus cancer tissue using PACO16948(RASSF9 Antibody) at dilution 1/45, on the right is treated with fusion protein. (Original magnification: x—200).



The image on the left is immunohistochemistry of paraffin-embedded Human liver cancer tissue using PACO16948(RASSF9 Antibody) at dilution 1/45, on the right is treated with fusion protein. (Original magnification: x—200).