

RASGEF1A Antibody



PACO16944

Product Information

Size:

50ul

Reactivity:

Human

Source:

Rabbit

Isotype:

IgG

Applications:

ELISA, IHC

Recommended dilutions:

ELISA:1:2000-1:5000, IHC:1:20-1:100

Protein Background:

RASGEF1A (RasGEF domain family, member 1A) is a 481 amino acid, guanine-nucleotide exchange factor (GEF) for H-Ras, K-Ras, and N-Ras. RASGEF1A may also play a role in cell migration. RASGEF1A is highly expressed in spinal chord and brain and contains one N-terminal Ras-GEF domain and one Ras-GEF domain. The gene that encodes RASGEF1A maps to human chromosome 10, which contains over 800 genes and 135 million nucleotides, making up nearly 4.5% of the human genome. PTEN is an important tumor suppressor gene located on chromosome 10 and, when defective, causes a genetic predisposition to cancer development known as Cowden syndrome.

Gene ID:

RASGEF1A

Uniprot

Q8N9B8

Synonyms:

RasGEF domain family, member 1A

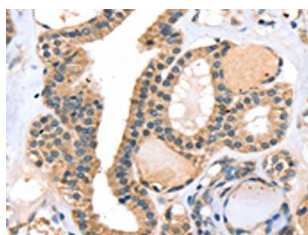
Immunogen:

Fusion protein of human RASGEF1A.

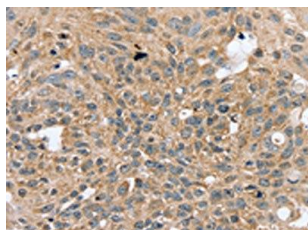
Storage:

-20°C, pH7.4 PBS, 0.05% NaN3, 40% Glycerol

Product Images



The image on the left is immunohistochemistry of paraffin-embedded Human thyroid cancer tissue using PACO16944(RASGEF1A Antibody) at dilution 1/20, on the right is treated with fusion protein. (Original magnification: x—200).



The image on the left is immunohistochemistry of paraffin-embedded Human breast cancer tissue using PACO16944(RASGEF1A Antibody) at dilution 1/20, on the right is treated with fusion protein. (Original magnification: x—200).