

RAB20 Antibody



PACO16932

Product Information

Size:

50ul

Reactivity:

Human, Mouse

Source:

Rabbit

Isotype:

IgG

Applications:

ELISA, WB

Recommended dilutions:

ELISA:1:1000-1:2000, WB:1:200-1:1000

Protein Background:

Rab 20 (Ras-related protein Rab-20) is a 234 amino acid, protein that localizes to the golgi apparatus and belongs to the Rab subfamily of small GTPases. Expressed in normal and cancerous pancreatic tissue, Rab 20 plays an important role in apical endocytosis and recycling and may be involved in the development of exocrine pancreatic adenocarcinomas.

Gene ID:

RAB20

Uniprot

Q9NX57

Synonyms:

RAB20, member RAS oncogene family

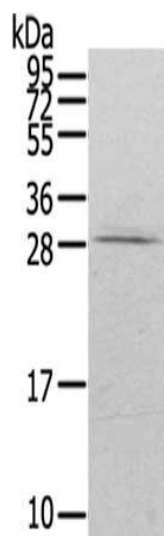
Immunogen:

Full length fusion protein.

Storage:

-20° C, pH7.4 PBS, 0.05% NaN3, 40% Glycerol

Product Images



Gel: 12%SDS-PAGE, Lysate: 40 μ g, Primary antibody: PACO16932(RAB20 Antibody) at dilution 1/200 dilution, Secondary antibody: Goat anti rabbit IgG at 1/8000 dilution, Exposure time: 30 seconds.