

RAB2A Antibody



PACO16923

Product Information

Size:

50ul

Reactivity:

Human, Mouse, Rat

Source:

Rabbit

Isotype:

IgG

Applications:

ELISA, WB, IHC

Recommended dilutions:

ELISA:1:1000-1:2000, WB:1:200-1:1000,
IHC:1:25-1:100

Protein Background:

The protein encoded by this gene belongs to the Rab family, members of which are small molecular weight guanosine triphosphatases (GTPases) that contain highly conserved domains involved in GTP binding and hydrolysis. The Rabs are membrane-bound proteins, involved in vesicular fusion and trafficking. This protein is a resident of pre-Golgi intermediates, and is required for protein transport from the endoplasmic reticulum (ER) to the Golgi complex.

Gene ID:

RAB2A

Uniprot

P61019

Synonyms:

RAB2A, member RAS oncogene family

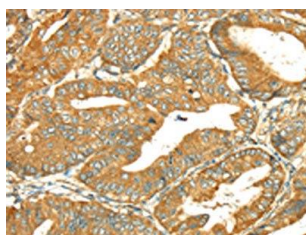
Immunogen:

Full length fusion protein.

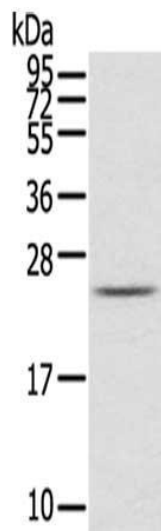
Storage:

-20° C, pH7.4 PBS, 0.05% NaN₃, 40% Glycerol

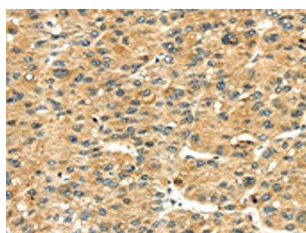
Product Images



The image on the left is immunohistochemistry of paraffin-embedded Human esophagus cancer tissue using PACO16923(RAB2A Antibody) at dilution 1/35, on the right is treated with fusion protein. (Original magnification: x—200).



Gel: 12%SDS-PAGE, Lysate: 40 μ g, , Primary antibody: PACO16923(RAB2A Antibody) at dilution 1/650 dilution, Secondary antibody: Goat anti rabbit IgG at 1/8000 dilution, Exposure time: 1 minute.



The image on the left is immunohistochemistry of paraffin-embedded Human liver cancer tissue using PACO16923(RAB2A Antibody) at dilution 1/35, on the right is treated with fusion protein. (Original magnification: x—200).