

PTRH2 Antibody



PACO16915

Product Information

Size:

50ul

Reactivity:

Human, Mouse

Source:

Rabbit

Isotype:

IgG

Applications:

ELISA, WB, IHC

Recommended dilutions:

ELISA:1:2000-1:10000, WB:1:1000-1:5000,
IHC:1:10-1:50

Protein Background:

PTRH2 (peptidyl-tRNA hydrolase 2), also known as BIT1 (Bcl-2 inhibitor of transcription 1), is a 179 amino acid, mitochondrial protein. During apoptosis, PTRH2 is released from the mitochondria to the cytoplasm. Once in the cytoplasm, PTRH2 regulates the function of two transcriptional regulators, TLE5 and TLE1, thereby promoting caspase-independent cell death. It is also believed that the natural substrate for PTRH2 may be peptidyl-tRNAs, which leave the ribosomes during protein synthesis.

Gene ID:

PTRH2

Uniprot

Q9Y3E5

Synonyms:

peptidyl-tRNA hydrolase 2

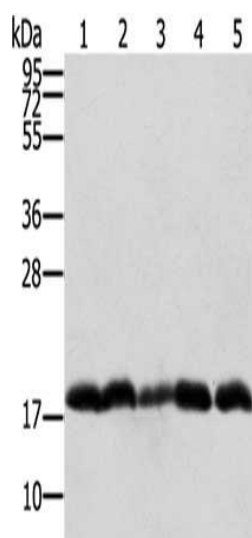
Immunogen:

Fusion protein of human PTRH2.

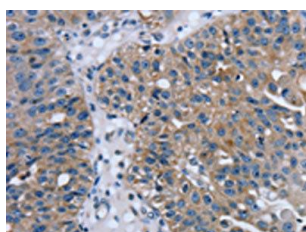
Storage:

-20° C, pH7.4 PBS, 0.05% NaN3, 40% Glycerol

Product Images



Gel: 12%SDS-PAGE, Lysate: 40 μ g, Lane 1-5: Raji cells, Jurkat cells, 231 cells, hepg2 cells, K562 cells, Primary antibody: PACO16915(PTRH2 Antibody) at dilution 1/250, Secondary antibody: Goat anti rabbit IgG at 1/8000 dilution, Exposure time: 20 seconds.



The image on the left is immunohistochemistry of paraffin-embedded Human breast cancer tissue using PACO16915(PTRH2 Antibody) at dilution 1/20, on the right is treated with fusion protein. (Original magnification: x—200).