

PMP2 Antibody



PACO16878

Product Information

Size:

50ul

Reactivity:

Human, Mouse

Source:

Rabbit

Isotype:

IgG

Applications:

ELISA, WB, IHC

Recommended dilutions:

ELISA:1:2000-1:10000, WB:1:1000-1:5000,
IHC:1:25-1:100

Protein Background:

Peripheral Myelin protein-2 (PMP2, Myelin P2, MP2), a small basic enzyme, is one of the principal proteins of peripheral Myelin and presumably participates in the transport of fatty acid, or the metabolism of Myelin lipids. Myelin P2 is similar in amino acid, sequence and tertiary structure to fatty acid, binding proteins found in the liver, adipocytes and intestine, although its expression is restricted to the nervous system.

Gene ID:

PMP2

Uniprot

P02689

Synonyms:

peripheral myelin protein 2

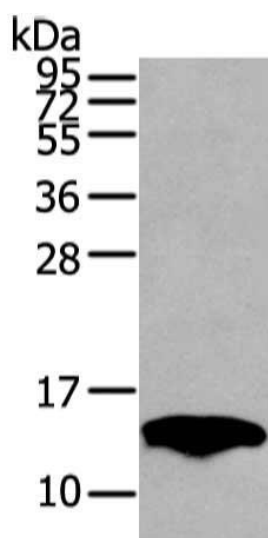
Immunogen:

Full length fusion protein.

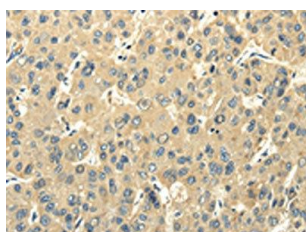
Storage:

-20° C, pH7.4 PBS, 0.05% NaN₃, 40% Glycerol

Product Images



Gel: 12%SDS-PAGE, Lysate: 40 μ g, Lane: Mouse fat tissue, Primary antibody: PACO16878(PMP2 Antibody) at dilution 1/400 dilution, Secondary antibody: Goat anti rabbit IgG at 1/8000 dilution, Exposure time: 15 seconds.



The image on the left is immunohistochemistry of paraffin-embedded Human liver cancer tissue using PACO16878(PMP2 Antibody) at dilution 1/25, on the right is treated with fusion protein. (Original magnification: \times —200).