

Product Information

Size:

50ul

Reactivity:

Human, Mouse

Source:

Rabbit

Isotype:

IgG

Applications:

ELISA, IHC

Recommended dilutions:

ELISA:1:1000-1:2000, IHC:1:25-1:100

Protein Background:

Plasminogen activator inhibitor-2 (placental PAI) is a coagulation factor that inactivates tPA and urokinase. It is present in most cells, especially monocytes/macrophages. PAI-2 exists in two forms, a 60-kDa extracellular glycosylated form and a 43-kDa intracellular form. It is present only at detectable quantities in blood during pregnancy, as it is produced by the placenta, and may explain partially the increased rate of thrombosis during pregnancy.

Gene ID:

SERPINB2

Uniprot

P05120

Synonyms:

serpin peptidase inhibitor, clade B (ovalbumin), member 2

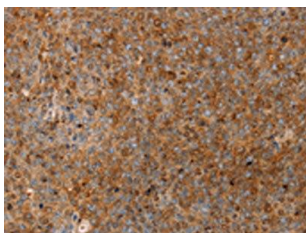
Immunogen:

Fusion protein of human SERPINB2.

Storage:

-20°C; C, pH7.4 PBS, 0.05% NaN₃, 40% Glycerol

Product Images



The image on the left is immunohistochemistry of paraffin-embedded Human ovarian cancer tissue using PACO16832(SERPINB2 Antibody) at dilution 1/20, on the right is treated with fusion protein. (Original magnification: x—200).