

PACO16807

Product Information

Size:

50ul

Reactivity:

Human

Source:

Rabbit

Isotype:

IgG

Applications:

ELISA, WB

Recommended dilutions:

ELISA:1:1000-1:2000, WB:1:200-1:1000

Protein Background:

NUSAP1 is a nucleolar-spindle-associated protein that plays a role in spindle microtubule organization. May associate with chromosomes and promote the organization of mitotic spindle microtubules around them.

Gene ID:

NUSAP1

Uniprot

Q9BXS6

Synonyms:

nucleolar and spindle associated protein 1

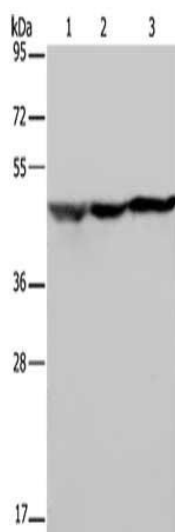
Immunogen:

Fusion protein of human NUSAP1.

Storage:

-20° C, pH7.4 PBS, 0.05% NaN₃, 40% Glycerol

Product Images



Gel: 8%SDS-PAGE, Lysate: 40 μ g, Lane 1-3: HT29 cells, HeLa cells, 293T cells, Primary antibody: PACO16807(NUSAP1 Antibody) at dilution 1/200, Secondary antibody: Goat anti rabbit IgG at 1/8000 dilution, Exposure time: 20 seconds.