

KIRREL2 Antibody



PACO16784

Product Information

Size:

50ul

Reactivity:

Human, Mouse

Source:

Rabbit

Isotype:

IgG

Applications:

ELISA, WB

Recommended dilutions:

ELISA:1:2000-1:5000, WB:1:500-1:2000

Protein Background:

KIRREL2 is a 708 amino acid, protein that is a member of the immunoglobulin superfamily of cell adhesion molecules. NEPH3 consists of five extracellular Ig-like repeats, a transmembrane domain, several glycosylation sites and a cytoplasmic domain that has a stretch of nine conserved residues. NEPH3 localizes to the interpodocyte filtration slit in the kidney and to the Langerhans islet beta cells in the pancreas.

Gene ID:

KIRREL2

Uniprot

Q6UWL6

Synonyms:

kin of IRRE like 2 (Drosophila)

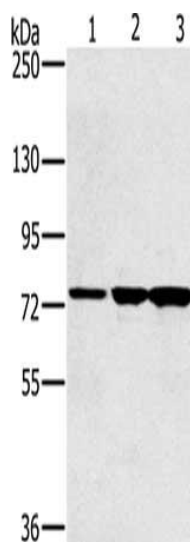
Immunogen:

Fusion protein of human KIRREL2.

Storage:

-20° C, pH7.4 PBS, 0.05% NaN₃, 40% Glycerol

Product Images



Gel: 6%SDS-PAGE, Lysate: 40 μ g, Lane 1-3: Human testis tissue, Jurkat cells, mouse liver tissue, Primary antibody: PACO16784(KIRREL2 Antibody) at dilution 1/500, Secondary antibody: Goat anti rabbit IgG at 1/8000 dilution, Exposure time: 15 seconds.