

# PITPNM1 Antibody



PACO16780

---

## Product Information

**Size:**

50ul

**Reactivity:**

Human, Mouse, Rat

**Source:**

Rabbit

**Isotype:**

IgG

**Applications:**

ELISA, IHC

**Recommended dilutions:**

ELISA:1:1000-1:2000, IHC:1:25-1:100

**Protein Background:**

PITPNM1 belongs to a family of membrane-associated phosphatidylinositol transfer domain-containing proteins that share homology with the Drosophila retinal degeneration B (rdgB) protein.

**Gene ID:**

PITPNM1

**Uniprot**

O00562

**Synonyms:**

phosphatidylinositol transfer protein, membrane-associated 1

**Immunogen:**

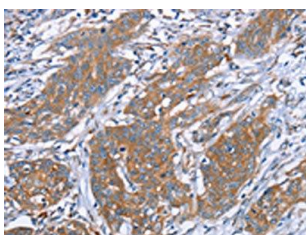
Fusion protein of human PITPNM1.

**Storage:**

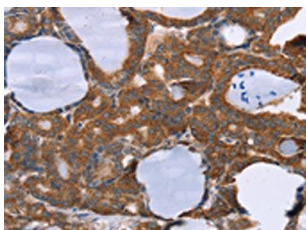
-20&deg; C, pH7.4 PBS, 0.05% NaN<sub>3</sub>, 40% Glycerol

## Product Images

---



The image on the left is immunohistochemistry of paraffin-embedded Human cervical cancer tissue using PACO16780(PITPNM1 Antibody) at dilution 1/40, on the right is treated with fusion protein. (Original magnification: x—200).



The image on the left is immunohistochemistry of paraffin-embedded Human thyroid cancer tissue using PACO16780(PITPNM1 Antibody) at dilution 1/40, on the right is treated with fusion protein. (Original magnification: x—200).