

# MTFR1 Antibody



PACO16715

---

## Product Information

**Size:**

50ul

**Reactivity:**

Human

**Source:**

Rabbit

**Isotype:**

IgG

**Applications:**

ELISA, IHC

**Recommended dilutions:**

ELISA:1:2000-1:5000, IHC:1:50-1:200

**Protein Background:**

This gene encodes a mitochondrial protein that is characterized by a poly-proline rich region. A chicken homolog of this protein promotes mitochondrial fission and the mouse homolog protects cells from oxidative stress. A related pseudogene of this gene is found on chromosome X.

**Gene ID:**

MTFR1

**Uniprot**

Q15390

**Synonyms:**

mitochondrial fission regulator 1

**Immunogen:**

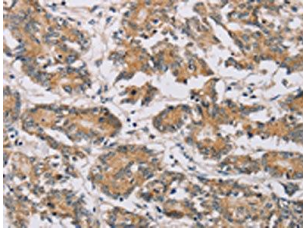
Fusion protein of human MTFR1.

**Storage:**

-20&deg; C, pH7.4 PBS, 0.05% NaN<sub>3</sub>, 40% Glycerol

## Product Images

---



The image on the left is immunohistochemistry of paraffin-embedded Human colon cancer tissue using PACO16715(MTFR1 Antibody) at dilution 1/30, on the right is treated with fusion protein. (Original magnification: x—200).