

MIER2 Antibody



PACO16690

Product Information

Size:

50ul

Reactivity:

Human, Mouse

Source:

Rabbit

Isotype:

IgG

Applications:

ELISA, IHC

Recommended dilutions:

ELISA:1:2000-1:10000, IHC:1:100-1:300

Protein Background:

MIER2(mesoderm induction early response 1, family member 2), also known as Mi-er2 or KIAA1193, is a protein that in humans is encoded by the MIER2 gene. It is a transcriptional repressor.

Gene ID:

MIER2

Uniprot

Q8N344

Synonyms:

mesoderm induction early response 1, family member 2

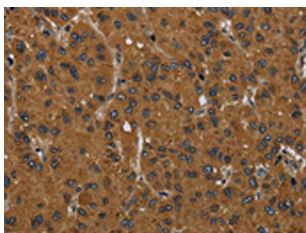
Immunogen:

Fusion protein of human MIER2.

Storage:

-20° C, pH7.4 PBS, 0.05% NaN3, 40% Glycerol

Product Images



The image on the left is immunohistochemistry of paraffin-embedded Human liver cancer tissue using PACO16690(MIER2 Antibody) at dilution 1/60, on the right is treated with fusion protein. (Original magnification: x—200).