

# MIER2 Antibody



PACO16689

---

## Product Information

**Size:**

50ul

**Reactivity:**

Human, Mouse

**Source:**

Rabbit

**Isotype:**

IgG

**Applications:**

ELISA, WB, IHC

**Recommended dilutions:**

ELISA:1:1000-1:2000, WB:1:200-1:1000,  
IHC:1:100-1:300

**Protein Background:**

MIER2(mesoderm induction early response 1, family member 2), also known as Mi-er2 or KIAA1193, is a protein that in humans is encoded by the MIER2 gene. It is a transcriptional repressor.

**Gene ID:**

MIER2

**Uniprot**

Q8N344

**Synonyms:**

mesoderm induction early response 1, family member 2

**Immunogen:**

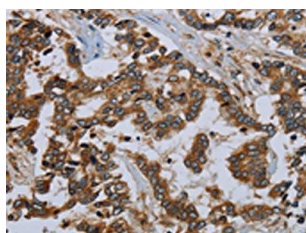
Fusion protein of human MIER2.

**Storage:**

-20&deg; C, pH7.4 PBS, 0.05% NaN3, 40% Glycerol

## Product Images

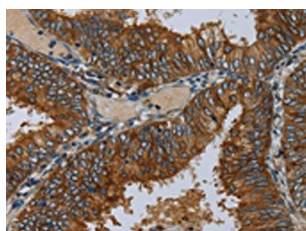
---



The image on the left is immunohistochemistry of paraffin-embedded Human liver cancer tissue using PACO16689(MIER2 Antibody) at dilution 1/50, on the right is treated with fusion protein. (Original magnification: x—200).



Gel: 6%SDS-PAGE, Lysate: 40 &mu; g, Lane: HeLa cells, Primary antibody: PACO16689(MIER2 Antibody) at dilution 1/550, Secondary antibody: Goat anti rabbit IgG at 1/8000 dilution, Exposure time: 10 minutes.



The image on the left is immunohistochemistry of paraffin-embedded Human colon cancer tissue using PACO16689(MIER2 Antibody) at dilution 1/50, on the right is treated with fusion protein. (Original magnification: x—200).