

PACO16681

Product Information

Size:

50ul

Reactivity:

Human

Source:

Rabbit

Isotype:

IgG

Applications:

ELISA, WB

Recommended dilutions:

ELISA:1:2000-1:5000, WB:1:500-1:2000

Protein Background:

SERPINB3 (serpin peptidase inhibitor, clade B (ovalbumin), member 3), also known as SCCA1, increase in advancing stages of some cervical, lung, esophageal and head and neck cancers). Human chromosome position 18q21.3 contains a cluster of serpins, including a tandem duplication of the SCCA gene, plasminogen activator inhibitor type 2, and maspin. SCCA is transcribed by two nearly identical genes (SCCA1 and SCCA2), and is mainly produced as SCCA1. The human SCCA1 gene encodes a 390 amino acid protein that was originally isolated from a metastatic cervical squamous cell carcinoma.

Gene ID:

SERPINB3

Uniprot

P29508

Synonyms:

serpin peptidase inhibitor, clade B (ovalbumin), member 3

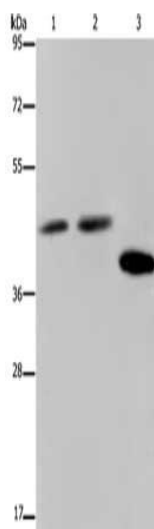
Immunogen:

Fusion protein of human SERPINB3.

Storage:

-20°C, pH7.4 PBS, 0.05% NaN₃, 40% Glycerol

Product Images



Gel: 8%SDS-PAGE, Lysate: 40 μ g, Lane 1-3: HeLa cells, 293T cells, LO2 cells, Primary antibody: PACO16681(SERPINB3 Antibody) at dilution 1/400, Secondary antibody: Goat anti rabbit IgG at 1/8000 dilution, Exposure time: 10 seconds.